

RECESSIBLE VL78I

3 Hour
Operation



Single screw height adjustment



Adjust to ensure ceiling integrity

FEATURES AND BENEFITS

Back up battery for emergency operation • Battery management, monitoring and self test • End of Life protection

CERTIFICATION & APPROVALS

Ingress protection IP54
to EN60529

Designed & manufactured
to EN60598-1

SOLAS B15 Fire rated



Standard Clear Diffuser



Prismatic Diffuser (PD)



Low Glare Louvre (LG)

TECHNICAL SPECIFICATION

LAMP TYPES

18W & 36W bi-pin fluorescent (T8)

POWER SUPPLY

220-254V 50/60Hz AC, 120V 50/60Hz AC

EMERGENCY OPERATION

Typically 3 hours duration at 25°C
22% of one lamp (18W)
14% of one lamp (36W)

BATTERY

6V, 4Ah internal Ni-Cad.

TERMINALS

4 core up to 4 mm² conductors with looping. Through wiring facility as standard. Terminals for live constant, live switched, neutral & earth are provided. External earth terminal as standard.

CABLE ENTRIES

4 x 20mm entries, two at each end (not suitable for looping both ends).

Supplied with 1 x transit plug and 3 x blanking plugs.

Cable entry devices (i.e. glands) must maintain the IP rating for the luminaire.

MATERIALS

Enclosure White polyester painted zinc coated steel body & frame.
Diffuser Clear polycarbonate.
Reflector White polyester painted zinc coated steel.
Gasket Neoprene rubber.

WEIGHT

2 x 18W - 8.5Kg.
2 x 36W - 13.5Kg.

SUSPENSION

Standard mounting is fixed side brackets with swing out arms, with provision for drop rod mounting.

Suitable for Danacoustic m300 planks or damper cc300 planks.

ORDERING REFERENCE

Std. Cat Ref.	Wattage	Lamp Type
V781/218/BI/EM	2x18W	Bi-Pin
V781/236/BI/EM	2x36W	Bi-Pin

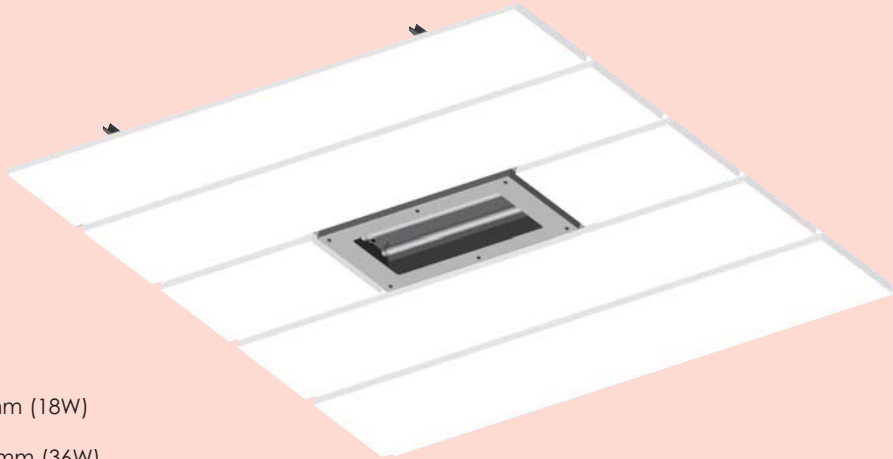
ACCESSORIES

There are no accessories for this product.

OPTIONS - SUFFIX TO CATALOGUE REF.

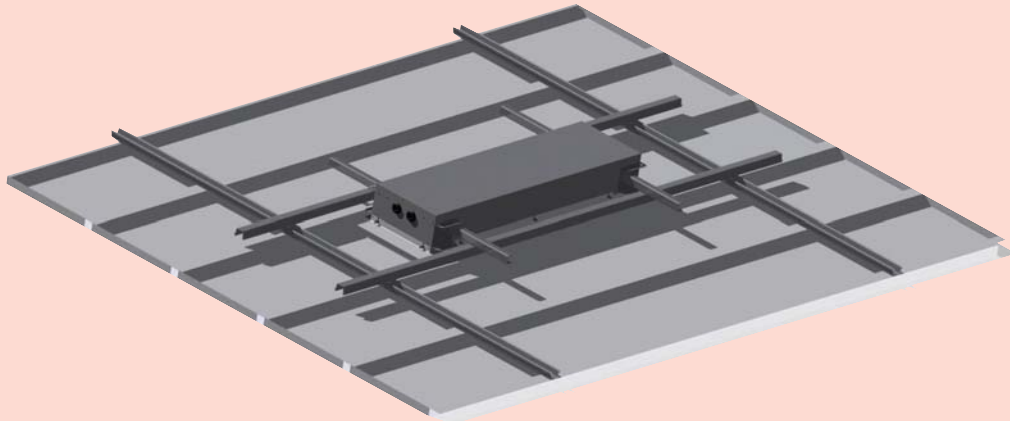
/120	Specific voltage (110/130V)
/MF	Mains fuse
/25	25mm Entries
/LG	Low glare louvre
/PD	Prismatic diffuser
/PC	Plasterboard (solid) ceiling
/BCM	Battery controlled management

M300 PLANK CEILING TYPES



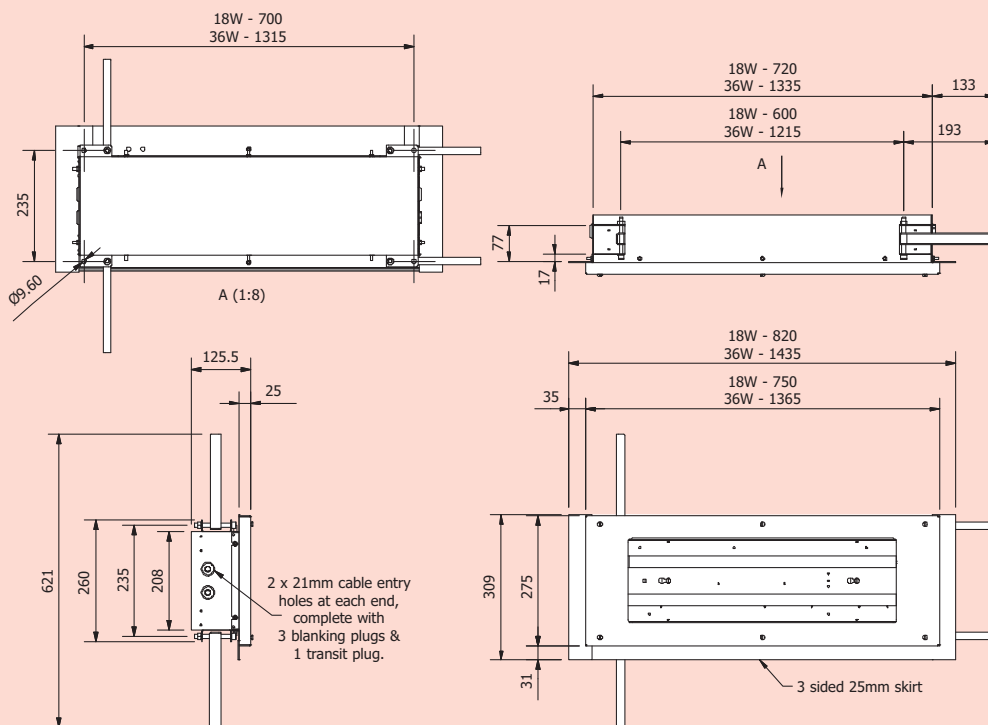
Typical aperture:
 Tile length x 800mm (18W)
 Tile length x 1415mm (36W)

View of plank ceiling with recessed luminaire



Typical 275 x 25mm tile mounting system

DIMENSIONS



Dimensions in millimetres

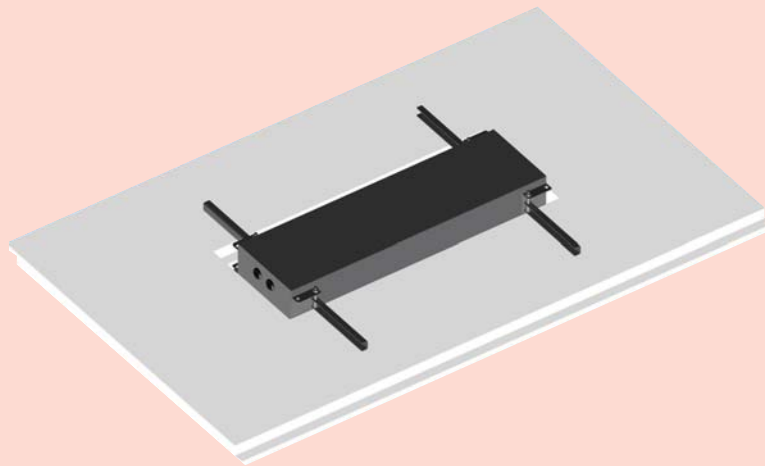


Typical aperture:

(18W) : 300mm x 745mm (+/-5mm)

(36W) : 300mm x 1360mm (+/- 5mm)

View of solid ceiling with recessed luminaire



Typical solid ceiling/panel mounting system

DIMENSIONS

