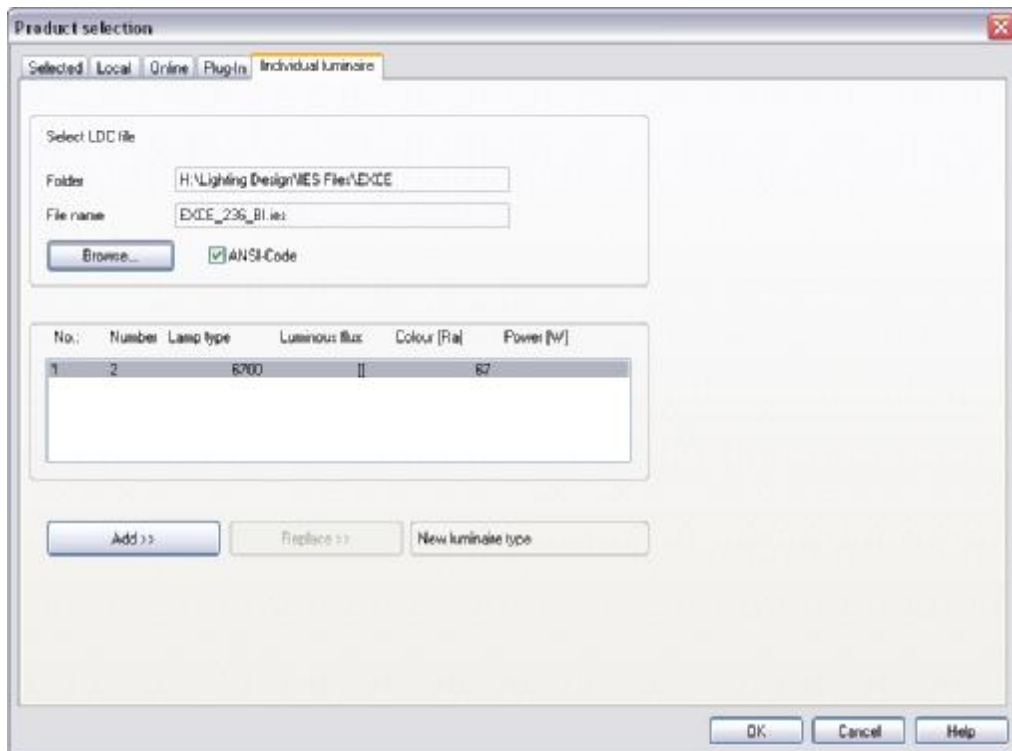


## IMPORTING IES PHOTOMETRY INTO RELUX

1. Create a new or open up an existing project within Relux.
2. On the Main Menu bar, select the "Insert" tab, "Luminaires", then "New single luminaire.."
3. Select the "Individual luminaire" tab on the Product Selection window, and browse for the individual IES files that you wish to import, opening them one by one.



4. Select 'Add' to import the photometric file into your project.
5. For further assistance, please refer to the Relux help files.